

INSTRUCTION MANUAL
FOR
48” DIA.
TURN TABLE-2

(WITH LINE, MACHINE No. G-19074-TT-2)

CLIENT: M/s. ECO-FARMS PTY LTD.



- HEAD OFFICE -

“MAHARSHI HOUSE”, THALTEJ FIRE STATION ROAD,
OPP. AMI MANGAL BUNGLOWS - 3, THALTEJ, AHMEDABAD – 380059 (INDIA)
Ph No: +91 - 9227285200 / 9227254300, Landline No: +91 - 079 48010523

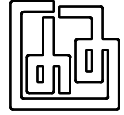
E-mail: info@maharshi.com

Website: www.maharshi.com ; www.labellingandlabels.com

For Any Complaints, Please Contact

Customer Care No: 097277 54307 or e-mail: service@maharshi.com

All Rights Reserved.



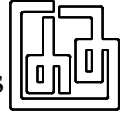
TURN TABLE

Introduction:

Turn Table is a device to feed or accumulate the round bottles, containers, jars, vials etc.... for an automatic packaging operation or it works as a holding platform at any intermittent operation in continuous packaging line. The size of the Supplied infeed turn table is 48" (Diameter).

Construction:

The equipment has aluminum casted round top plate lined with S.S. Matt finished sheet. Top Plate is driven Thr'o set of spur gears and bearing support is also provided at bellow edge of round rotating plate for jerk less & smooth motion, Bottom frame is made of sturdy M. S. angle or S. S. Square Pipe & driving unit is fitted inside. Frame is covered with S.S. 304 matt finished sheet. Suitable ht. Adjustable swivel type legs supports are provided to take care of uneven flooring &

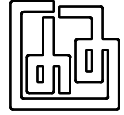


to match adjusting machine height. Suitable S. S. flat guides are provided on top. You can modify entry or exit as per plant layout of on-line connected other machines.

There is Provision of Start/Stop Push Button and speed pot on Cover of Driving Unit.

Working:

Turn Table is having round Top Plate with product guide. Load the Bottles/Container/Jars/Vials on top plate & start the equipment, with the help of driving unit this Top Plate will rotate clockwise. Product will move to outer periphery & to exit through guide and then transfer to other on-line connected machine. You can modify entry/exit as per in-feed or out-feed of connected machine as plan layout of packing line. Speed can be adjusted with the help of given speed pot.



TECH. SPECIFICATION

POWER SUPPLY:

220/240 V AC. Single Phase With Neutral and Proper Earthing.

TOP PLATE:

48" (Approx. 1200 mm.) Dia. made Of Aluminum

Lined with S. S. Sheet

OVER ALL DIMENSIONS:

48" (Approx. 1200 mm.) Dia. x 900 mm. Operating Ht.

(± 50 mm. Adjustable)

MOTOR:

MAKE: '**Rotomotive**' Three Phase AC.

H. P.: 1.0 HP.

GEAR BOX:

MAKE: '**Rotomotive**'

TYPE: Box-050, 80B5

RATIO: 30 : 1

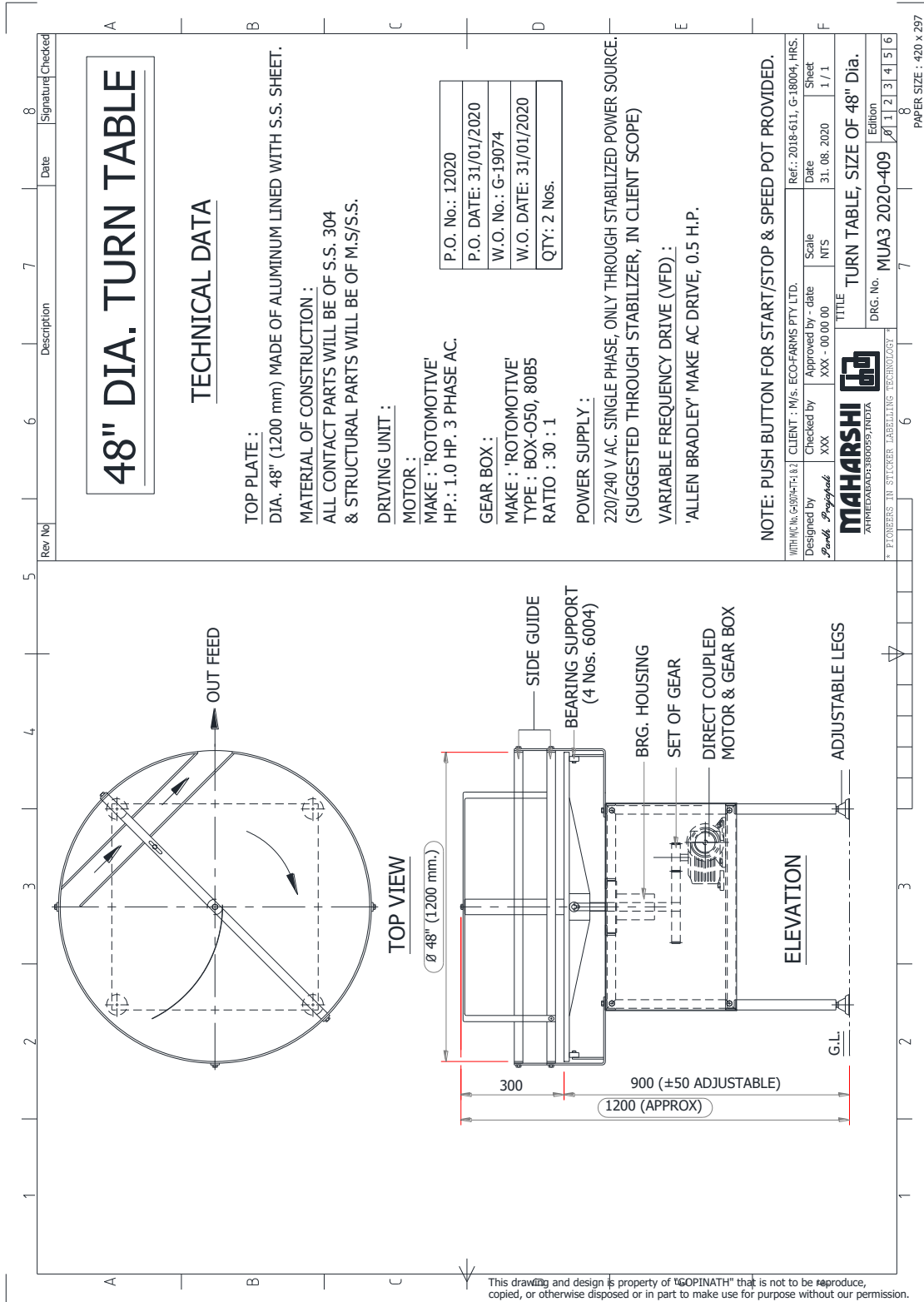
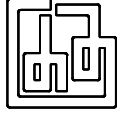
VARIABLE FREQUENCY DRIVE:

MAKE: '**Allen Bradley**' Power Flex-4M AC Drive

H. P.: 0.5 HP.

Note: Push Button for start/stop & speed pot provided on cover of Driving Unit.

DESIGN OF THE SYSTEM (GA. DRAWING)



48" DIA. TURN TABLE

TECHNICAL DATA

TOP PLATE :
 DIA. 48" (1200 mm) MADE OF ALUMINIUM LINED WITH S.S. SHEET.
MATERIAL OF CONSTRUCTION :
 ALL CONTACT PARTS WILL BE OF S.S. 304 & STRUCTURAL PARTS WILL BE OF M.S/S.S.

DRIVING UNIT :

MOTOR :
 MAKE : 'ROTOMOTIVE'
 HP. : 1.0 HP. 3 PHASE AC.

GEAR BOX :

MAKE : 'ROTOMOTIVE'
 TYPE : BOX-050, 80B5
 RATIO : 30 : 1

POWER SUPPLY :

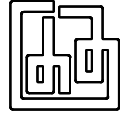
220/240 V AC. SINGLE PHASE, ONLY THROUGH STABILIZED POWER SOURCE.
 (SUGGESTED THROUGH STABILIZER, IN CLIENT SCOPE)
 VARIABLE FREQUENCY DRIVE (VFD) :
 'ALLEN BRADLEY' MAKE AC DRIVE, 0.5 H.P.

| | |
|------------|------------|
| P.O. No.: | 12020 |
| P.O. DATE: | 31/01/2020 |
| W.O. No.: | G-19074 |
| W.O. DATE: | 31/01/2020 |
| QTY: | 2 Nos. |

NOTE: PUSH BUTTON FOR START/STOP & SPEED POT PROVIDED.

| | | |
|---|----------------------------------|--------------------------------|
| WITH NC No. G-8074-F1-N2 | CLIENT : M/s. ECO-FARMS PTY LTD. | Ref. : 2018-611, G-18004, HRS. |
| Designed by | Approved by - date | Date |
| XXX | XXX - 00/00/00 | 31. 08. 2020 |
| Scale | Sheet | 1 / 1 |
| NTS | 1 / 1 | |
| MAHARSHI ADVANCED LABELLING TECHNOLOGY PUNE, INDIA | | |
| TITLE : TURN TABLE, SIZE OF 48" Dia. DRG. No. : MUA3 2020-409 Edition : 1 2 3 4 5 6 | | |

PAPER SIZE : 420 x 297



MAINTENANCE

DAILY:

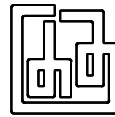
- i. The machine / turn table should be kept clean and free from spilled product.
- ii. Check the sensor is clean and at proper position.

WEEKLY:

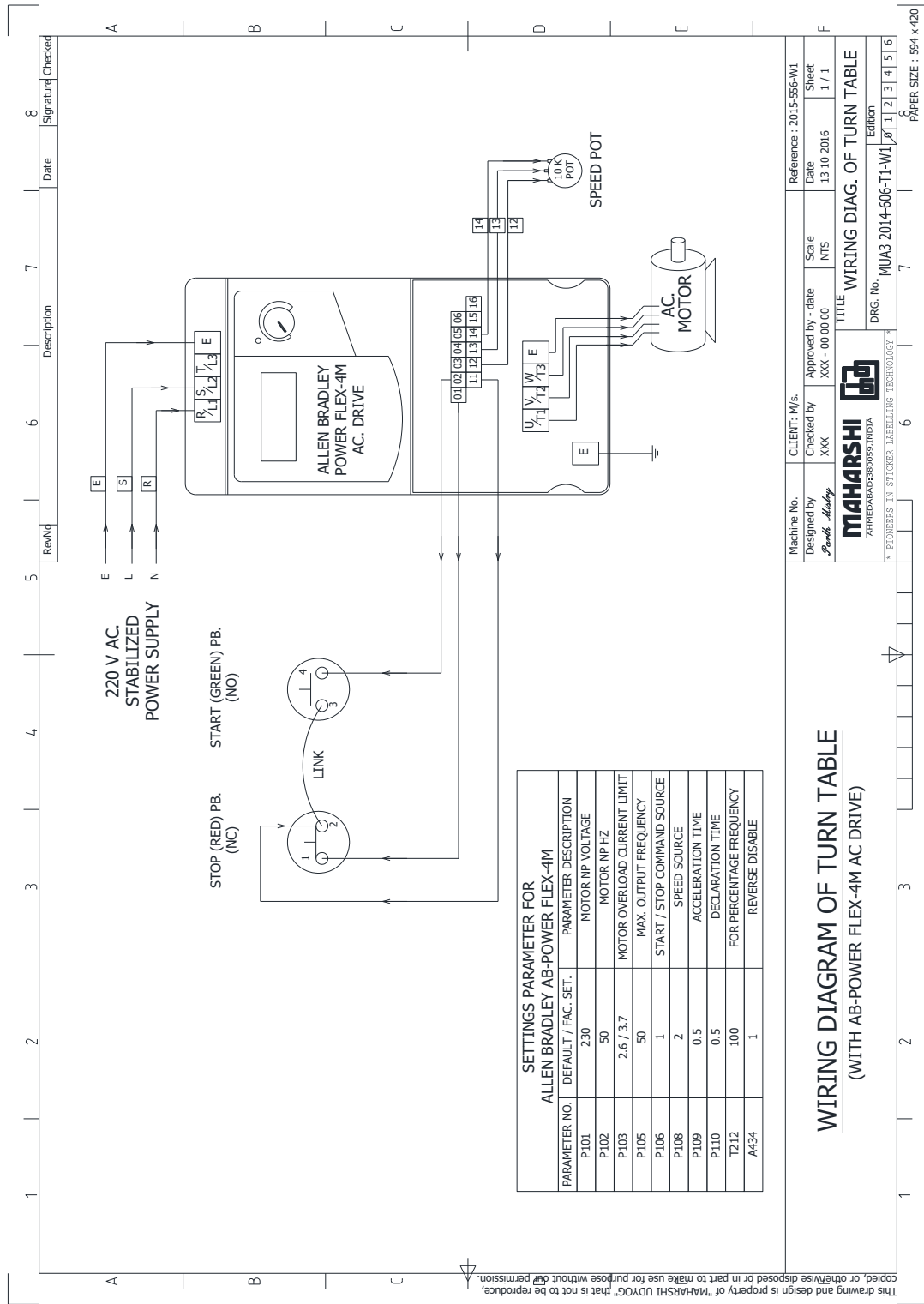
- i. Check the tightness of all the bolts and nuts to avoid misalignment or accident.
- ii. Apply the grease to gears.
- iii. Check the alignment of base plate.

MONTHLY:

- i. **Blow the low-pressure air to operating/control panel from a distance, to remove dust without damaging wiring connections.**
- ii. Check the wiring connections. If found loose, tighten the same.
- iii. Check the oil level in gearbox. (Note: **‘Rotomotive’** make gearbox is supplied with long-life lubrication and they do not require any maintenance.)



WIRING DIAGRAM



SETTINGS PARAMETER FOR ALLEN BRADLEY AB-POWER FLEX-4M

| PARAMETER NO. | DEFAULT / FAC. SET. | PARAMETER DESCRIPTION |
|---------------|---------------------|------------------------------|
| P101 | 230 | MOTOR NP VOLTAGE |
| P102 | 50 | MOTOR NP HZ |
| P103 | 2.6 / 3.7 | MOTOR OVERLOAD CURRENT LIMIT |
| P105 | 50 | MAX. OUTPUT FREQUENCY |
| P106 | 1 | START / STOP COMMAND SOURCE |
| P108 | 2 | SPEED SOURCE |
| P109 | 0.5 | ACCELERATION TIME |
| P110 | 0.5 | DECLARATION TIME |
| T212 | 100 | FOR PERCENTAGE FREQUENCY |
| A434 | 1 | REVERSE DISABLE |

WIRING DIAGRAM OF TURN TABLE (WITH AB-POWER FLEX-4M AC DRIVE)

| | | |
|------------------------------------|--------------------------------------|------------------------|
| Machine No. | CLIENT: M/S. | Reference : 2015-56-W1 |
| Designed by <i>Pankh Mahesh</i> | Checked by XXX | Date 13.10.2016 |
| | Approved by - date XXX - 00.00.00 | Scale NTS |
| | | Sheet 1 / 1 |

MAHARSHI
7992624230@GMAIL.COM

WIRELESS IN STORE LABELLING TECHNOLOGY

DRG. No. MUA3 2014-606-T1-W1

Edition
1 | 2 | 3 | 4 | 5 | 6

PAPER SIZE : 594 x 420

| | | |
|---|-------------|---------|
| 8 | Signature | Checked |
| 7 | Date | |
| 6 | Description | |
| 5 | Rev/Id | |

This drawing and design is property of "MAHARSHI UDYO" that is not to be reproduced, copied, or otherwise disposed of in part to make use for purpose without our permission.

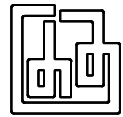


PHOTO GALLERY

